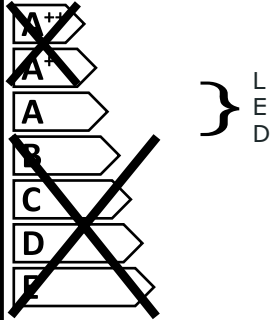


smartwares® GPI-001-HW



Diese Leuchte enthält eingebaute LED-Lampen.



Die Lampen können in der Leuchte nicht ausgetauscht werden.

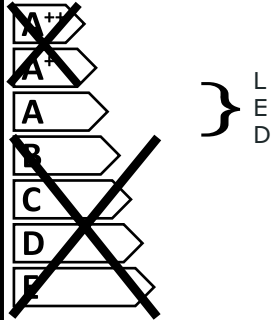
874/2012



smartwares® GPI-001-HW



Ce luminaire comporte des lampes à LED intégrées.



Les lampes de ce luminaire ne peuvent pas être changées.

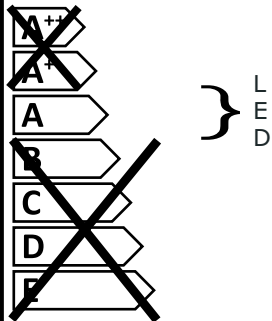
874/2012



smartwares® GPI-001-HW



This luminaire contains built-in LED lamps.



The lamps cannot be changed in the luminaire.

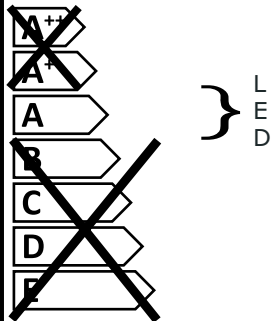
874/2012



smartwares® GPI-001-HW



Deze armatuur bevat ingebouwde LED-Lampen.



In de armatuur kunnen de lampen niet worden vervangen.

874/2012



IP54



CUSTOMER SERVICE	
NL : 0900-208888	Lokaal tarief
BE : 070-233031 (NL) Lokaal tarief	Lokaal tarief
FR : 0800-97570 (FR) Gratuit	Gratuit
FR : 0825 560 650	15ct/min
DE : +49 (0) 1805 010762	14ct./Min. dt. Festnetz
UK : +44 (0) 345 230 1231	Mobil max. 42ct./Min
ES : +34 938427589	
www.SMARTWARES.EU	



smartwares®

LED
LIGHT incl.



INDOOR AND
OUTDOOR

AI

ALUMINIUM



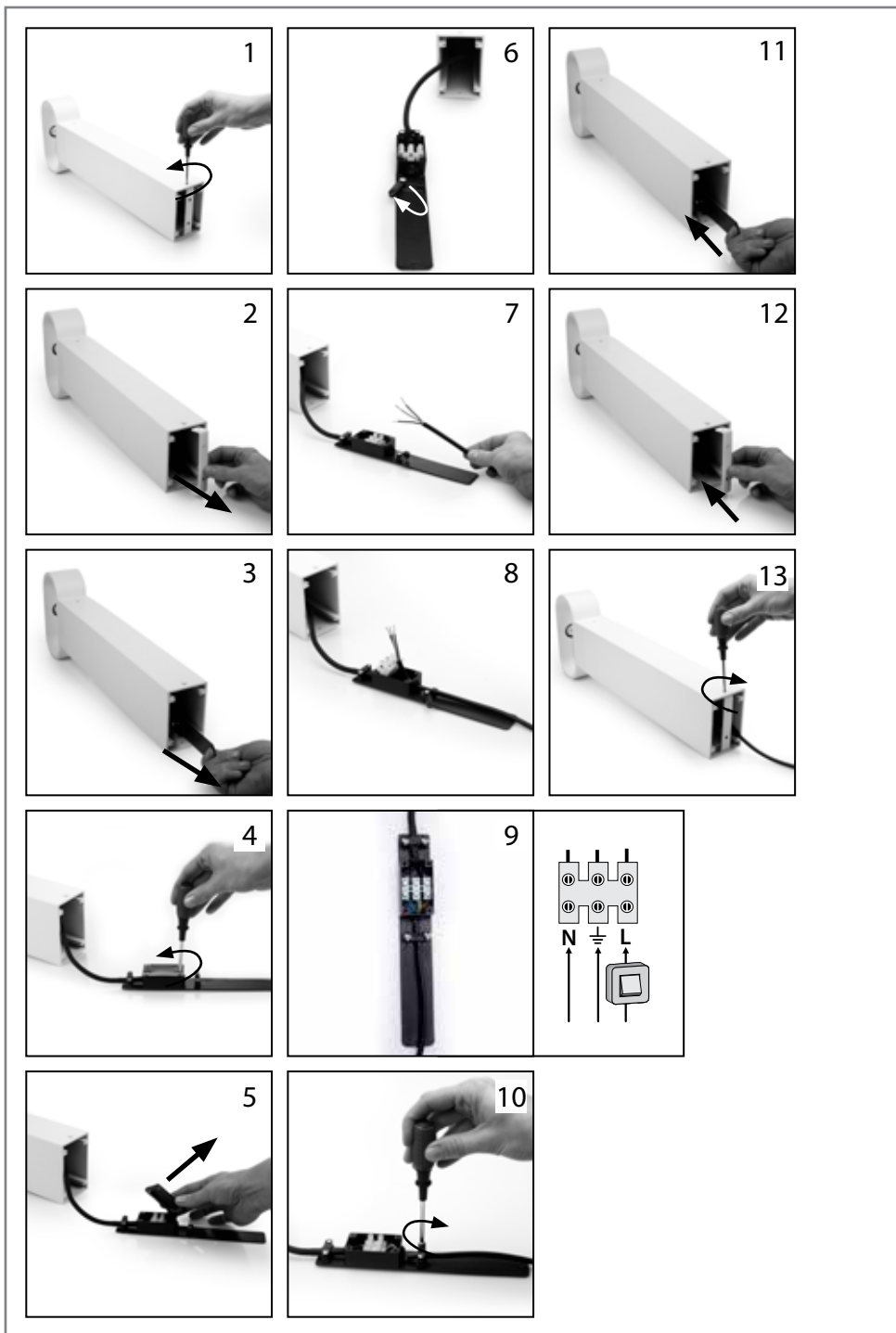
Maria

aluminium LED outdoor light

EN LED outdoor light
DE LED Außenleuchte
PL Oświetlenie zewnętrzne

NL LED buitenverlichting
FR Applique murale extérieure LED
ES Luz exterior LED

GPI-001-HW / 10.027.46



GPI-001-HW (10.027.46)	
POWER	220-240V~ 50/60Hz
LED	Yes, integrated
WATTAGE	9W
LUMINOUS FLUX	575lm
COLOUR TEMPERATURE	±3000 K
CRI	>65
SWITCHING CYCLES	15000
PROTECTION CLASS	IP54
ENERGY CLASS	A
LIFETIME	25.000h
DIMMABLE	NO
ISOLATION CLASS	I
GUARANTEE	2 years

